



HEALING HOME SANCTUARY OF FRANKLINTON

Lauren Rose | Design 5200 | Project Programming



TABLE OF CONTENTS

Background Information

Project Statement

Site Context Research

Objectives & Goals

Design Concepts

Concept Statement

Brand Filter

Design Strategies

VP & Inspiration Board

Design Model

Floor Plans

Section Views

Perspectives

The Users

User Personas

User Journey Narrative

User Journey Diagram

Research Results

Case Studies

Program Area Summary

Adjacency Matrix/ Diagram

Spatial Program Criteria

Appendix



BACKGROUND INFORMATION

A small shelter for single women struggling with homelessness in Franklinton, a suburb of Columbus that has significant economic struggles that affect the residents of the area. Healing Home will be a sanctuary that provides these women with resources to guide them out of homelessness towards a stable lifestyle. Offering counseling, health care, a safe place to stay, and many other benefits.

Average Salary: \$13,000 - \$27,000

Franklinton Poverty Rate: 52%

Franklin County Poverty Rate: 17%.

Limited access to healthy food:

- Conveniences stores vs. grocery store
- Factor of lower life expectancy

Limited healthcare resources in area:

- Gravity plans to open an Ohio Health Primary Care and Urgent Care in their Phase II plans.

EMOTION | FUNCTION

Inviting
Positive
Genuine
Protected
Inclusive

Flexible
Multifaceted
Realistic
Order



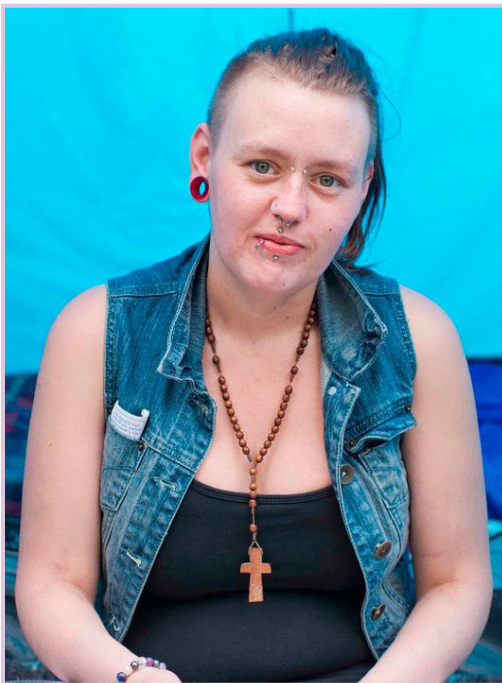
THE USERS



SHEILA PETERSON | 31

NEEDS: Shelter, Safety, Security, Nutrition, Counselling, & Aid

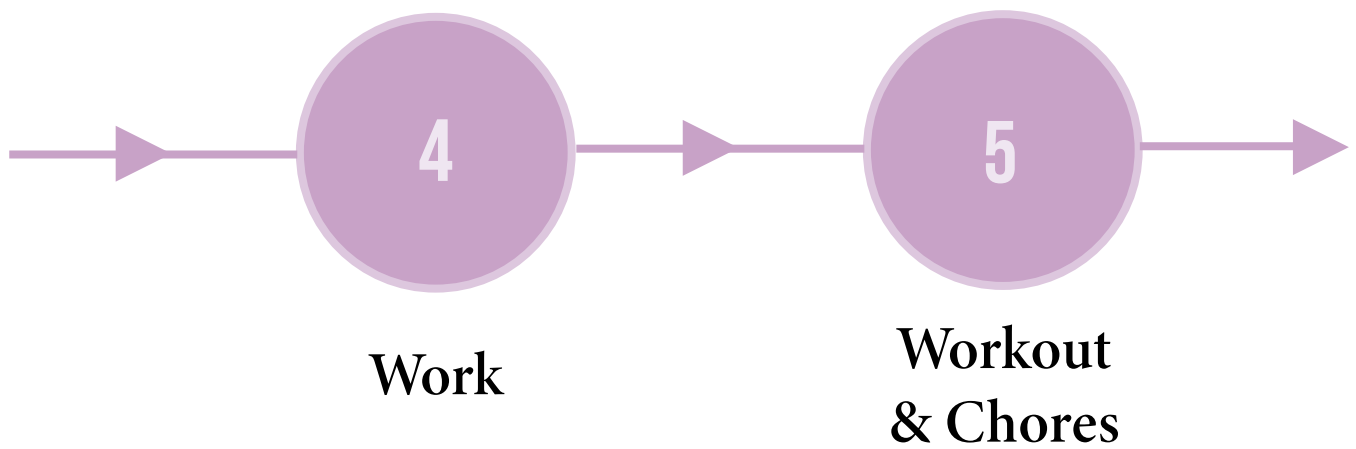
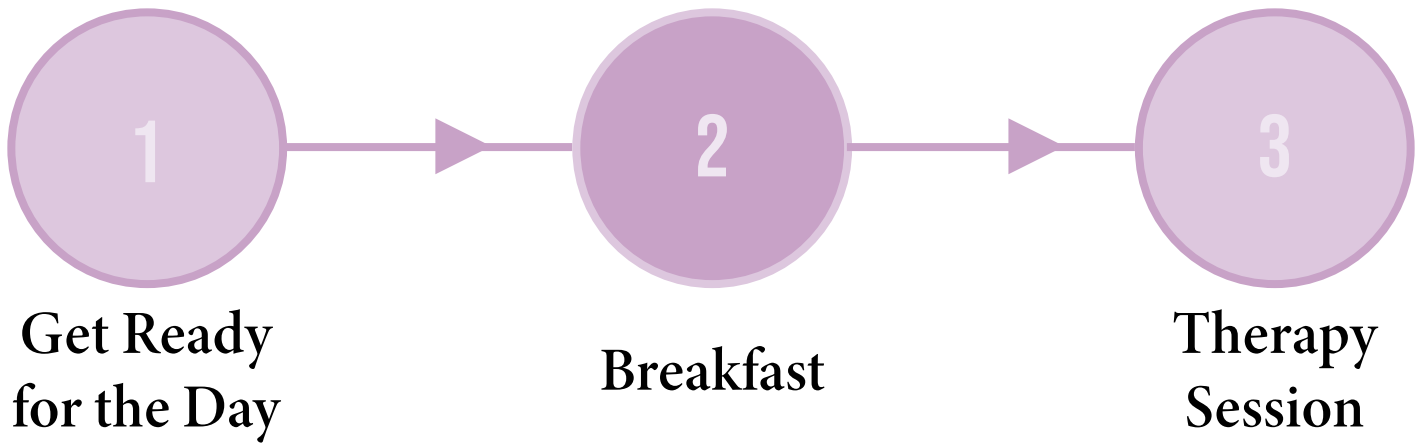
ABOUT: Sheila is a homeless single woman who has been homeless in Franklinton for over two years. She has struggled with finding a job to make ends meet for several years. She barely finished high school and never went to college so she has felt stuck where she is. For a period of time Sheila had a part time job at a convenience store until she no longer had a home and the resources to stay clean and to arrive to work on time. She is at a point where she really needs help, to get back on her feet, and a support system that will help her to do so.



WANDA YOUNG | 19

NEEDS: Shelter, Safety, Security, Nutrition, Counselling, & Education

ABOUT: Wanda grew up in a poor family and was kicked out of her parents home when she turned 18. Because of this Wanda never finished high school and struggled to find a job because of her age and limited education. She supported herself by making jewelry and painting when she could. So after being on the streets for two years Wanda wants to make a change and get help to finish high school and find a job that will support her. Eventually Wanda hopes she can go to college and pursue a degree in the fine arts.





SHEILA PETERSON

Sheila's day starts by getting up and making her bed in her private room. From there she gets ready in the community bathroom where everyone else is starting their day. After getting ready Sheila goes to make breakfast for herself in the large open kitchen, then sits down to eat by herself next to the window because she is not feeling social this morning. After finishing breakfast Sheila meets with her counselor, in a private office, for a brief session before heading to work. When she comes back from work so unwinds by walking on the treadmill before moving on to her chores. After working out Sheila works with one of the other residents to complete their chore of cleaning the bathrooms. After everyone completes their chores they sit down for dinner together. Once dinner is over Sheila and the other women meet together in the lounge area, after cleaning up, to watch a movie. After watching the movie Sheila gets ready for bed and returns to her room to read before going to sleep.



VICK & TYLER SHARD | 21

NEEDS: A private space to conduct sessions with individuals and groups. Also, access to resources to aid in their sessions.

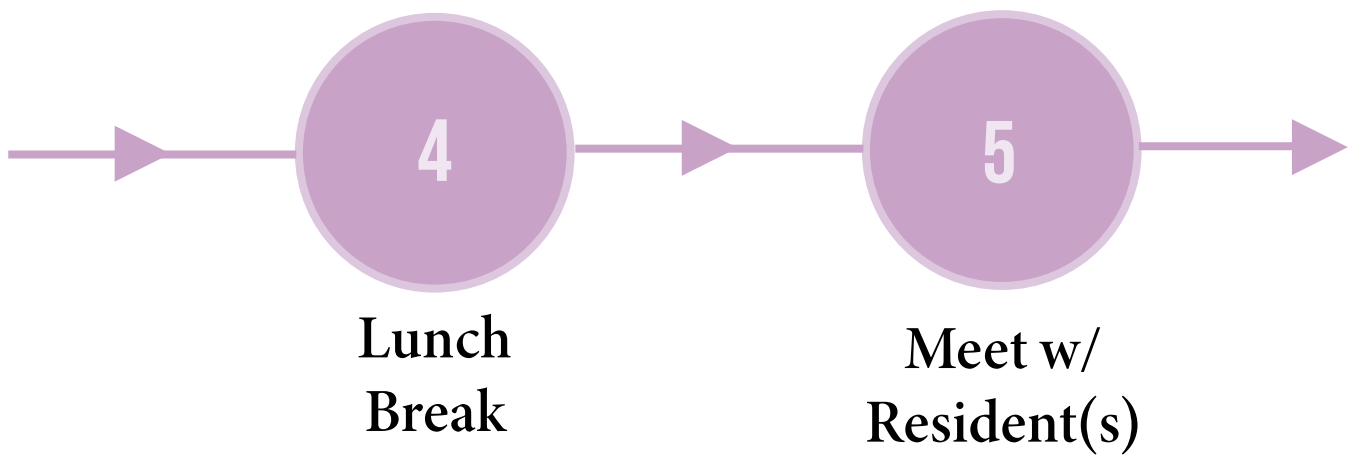
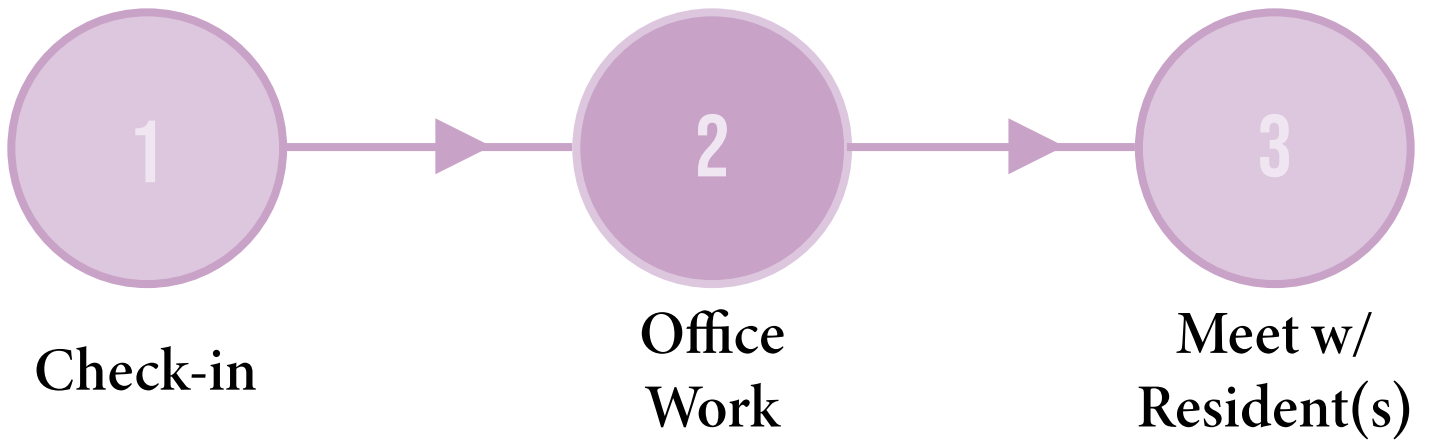
ABOUT: Vick and Tyler live in Columbus and have a passion for helping those in need in their community. They volunteer throughout Franklinton wherever they are most needed. Both grew up in poor families so they know the struggle the women at the Healing Home are going through. Because of their experience they spent several hours a week helping in the kitchen and with activities at the sanctuary. Recently Vick received her therapy license and took on a full-time position as a counselor at Healing Home. Tyler also has a therapy license and has been working there part-time, for three years helping the women work through trauma they have experienced with men.



TRACY MULLE | 36

NEEDS: A private space to conduct sessions with individuals and groups. Also, access to resources to aid in the job process.

ABOUT: Tracy was a homeless woman in Franklinton during her early twenties until she found help at a sanctuary similar to Healing Home. After building herself back up she went to college to earn a degree in social work. She now works full time at a local school in Columbus and spends a lot of her free time volunteering at sanctuaries in Franklinton. Tracy volunteers at Healing Home to help women who are in same position as she was 10 years to find a job. She works with them on resumes, interviews, applications, and anything else she can do to help these women find stability in their lives she is there for them.





VICK & TYLER SHARD



TRACY MULLE

Vick starts her day at Healing Home by checking in at the front desk, for security reasons, and then swipes her card to get into main part of the building. Once in the building Vick goes to her private office where she reviews her schedule for the day and prepares for her sessions. Shortly after getting there Vick begins meeting with women in her office individually and in groups. By mid-afternoon she has met several women and takes a break to eat lunch with other co-workers and residents of the home. After finishing lunch Vick continues with her scheduled meetings, some of her meetings in the afternoon Tyler joins her to work with various residents. As the day nears to an end the counselors have a breif group session with those who want to participate. Then to wrap up the day Vick and Tyler meet with Tracy to talk about the residents and confer on their progress and needs. Once they wrap up their meeting Vick cleans up her office and goes to the front desk to checkout for the day.



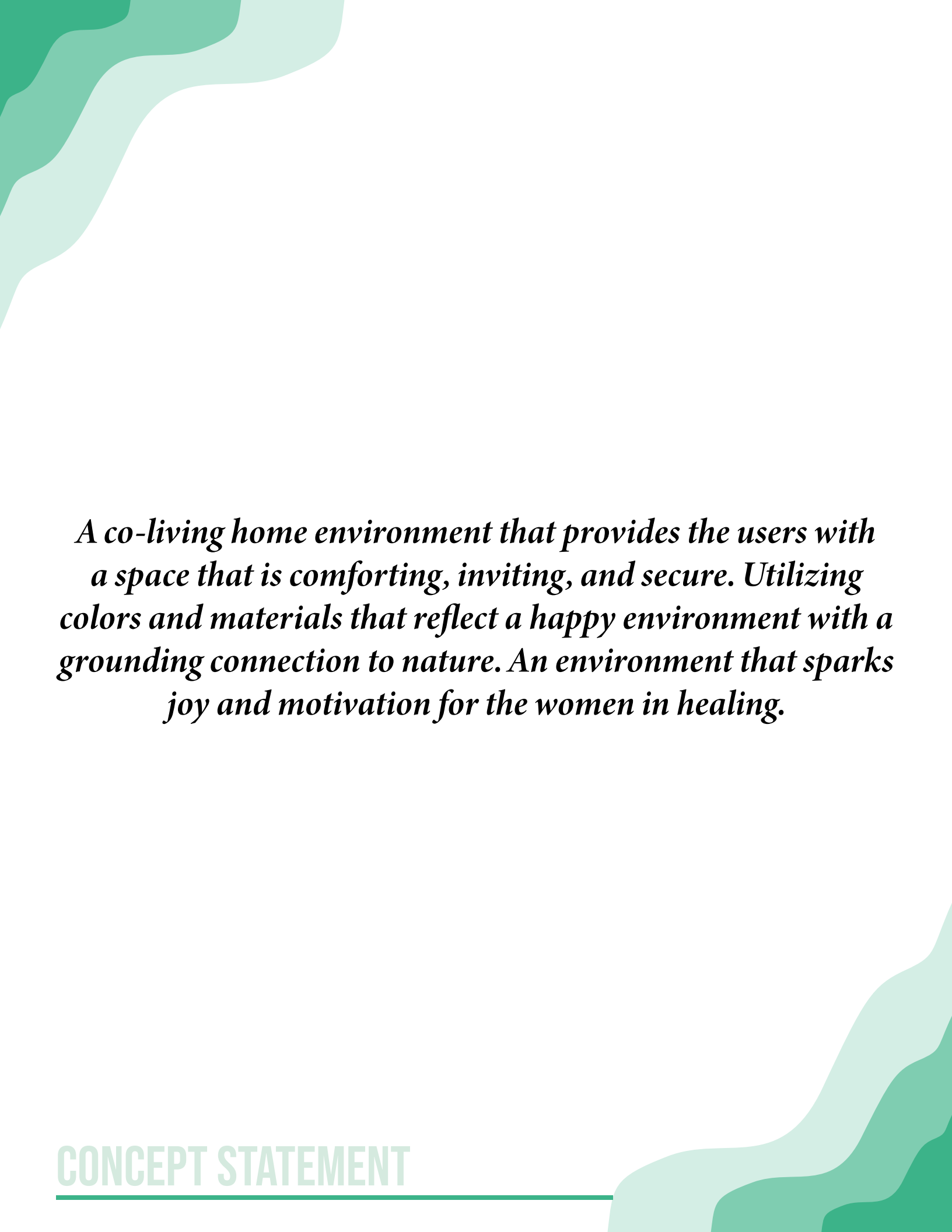
COMMUNITY SHELTER BOARD (CSB)

NEEDS: A safe place for women to go to in need of a place to stay. A place that has the resources and ability to provide for these women.

ABOUT: Community Shelter Board (CSB) is an organization that helps those who are struggling and homeless find shelters and needed resources. CSB's role is to help homeless women that come to them find a place to stay based on their needs and what will best fit them. A large portion of the homeless single women that come to CSB to find help are placed at Healing Home because they provide a safe place for women to stay but also the resources to help them get back on their feet.



DESIGN CONCEPTS



A co-living home environment that provides the users with a space that is comforting, inviting, and secure. Utilizing colors and materials that reflect a happy environment with a grounding connection to nature. An environment that sparks joy and motivation for the women in healing.

**A SANCTUARY
FOR HEALING AND
NOURISHING WOMEN**

PROTECTED

INCLUSIVITY

CREATIVE

EVOLVING

MULTIFACETED

TRUSTED

APPROACHABLE

INVITING

FLEXIBLE

NATURE

BRAND FILTER



SECURITY

Utilizing colors and private spaces that allow the users to feel safe and protected within a homelike setting.



COMMUNITY

Creating dynamic spaces to help the residents, and are also available to the public. Utilizing group spaces for interactions.



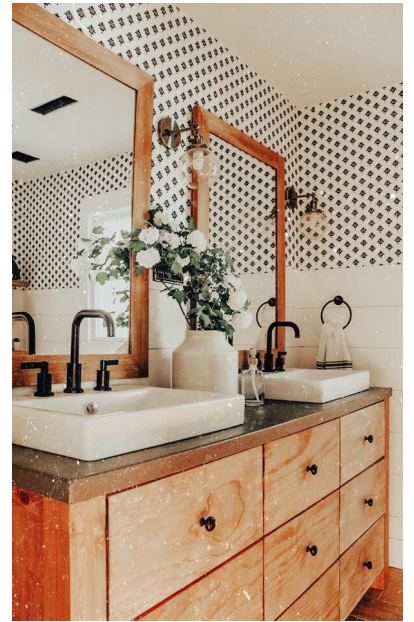
CREATIVE EXPRESSION

Utilizing art from local community members and creating positive environments with a variety of colors.

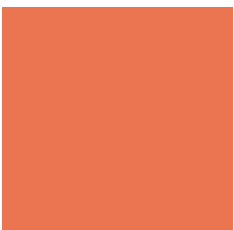
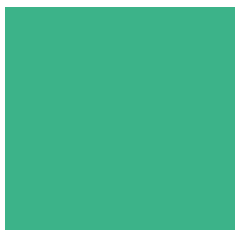
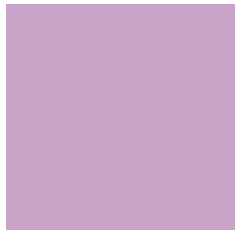
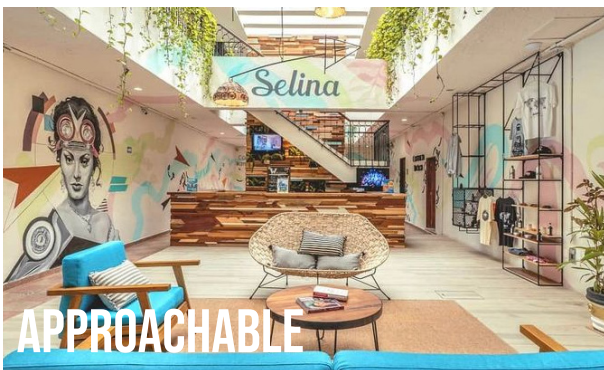
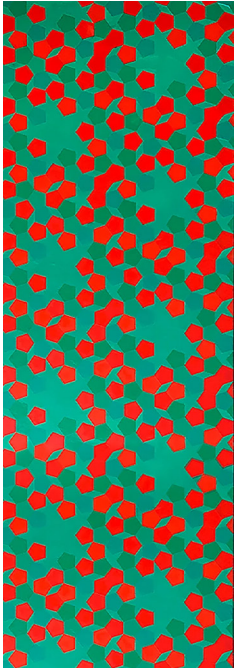
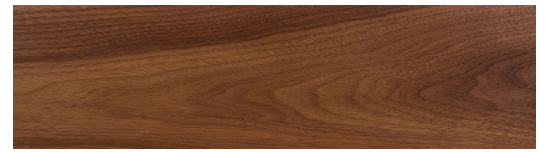


BIOPHILA

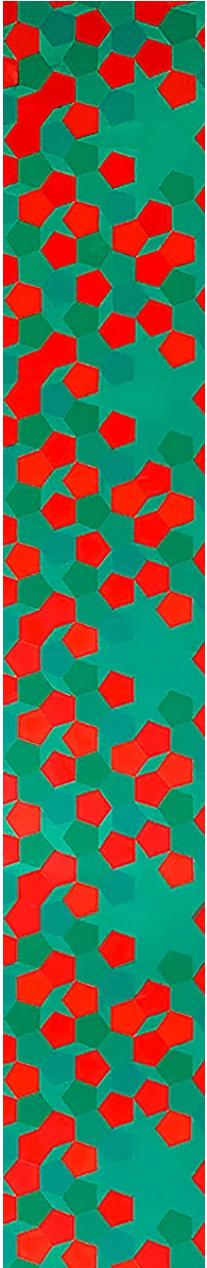
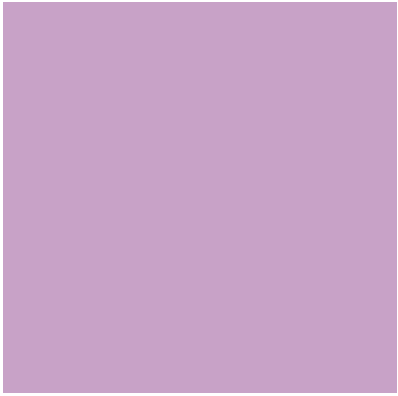
Incorporating ties to nature that is grounding and calming. Also, adding biophilic textures to the space to evoke comfort and security.



INSPIRATION BOARD



VISUAL POSITIONING BOARD



MATERIALS PALETTE





RESEARCH RESULTS



Services & Amenities:

- Managers office
- Community kitchen/lounge
- Conference Room
- Laundry Room
- Counseling Office
- Bicycle Storage
- Community garden
- Studios & manager's unit
- Reception lobby

Location: Los Angeles, California

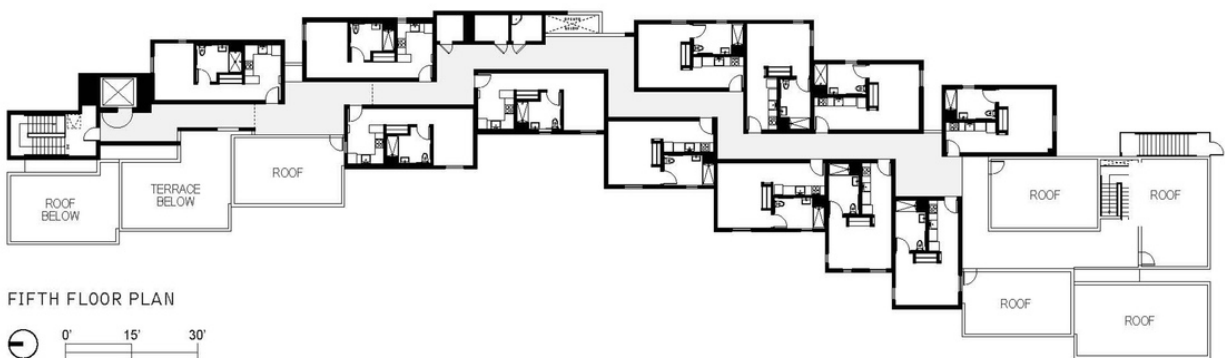
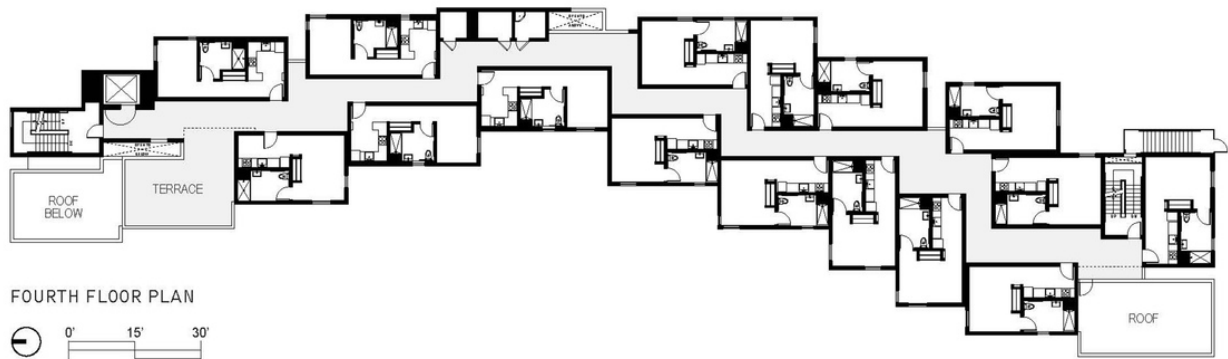
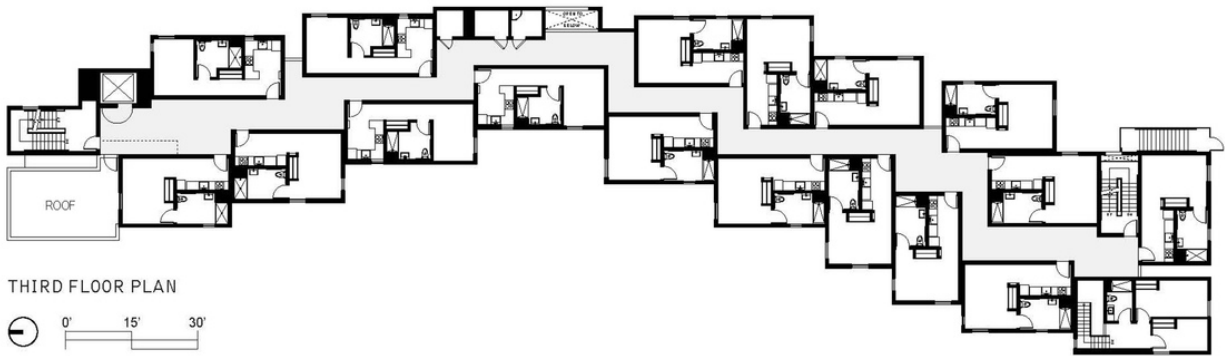
Square Footage: 45,000 sf

Floors: 5

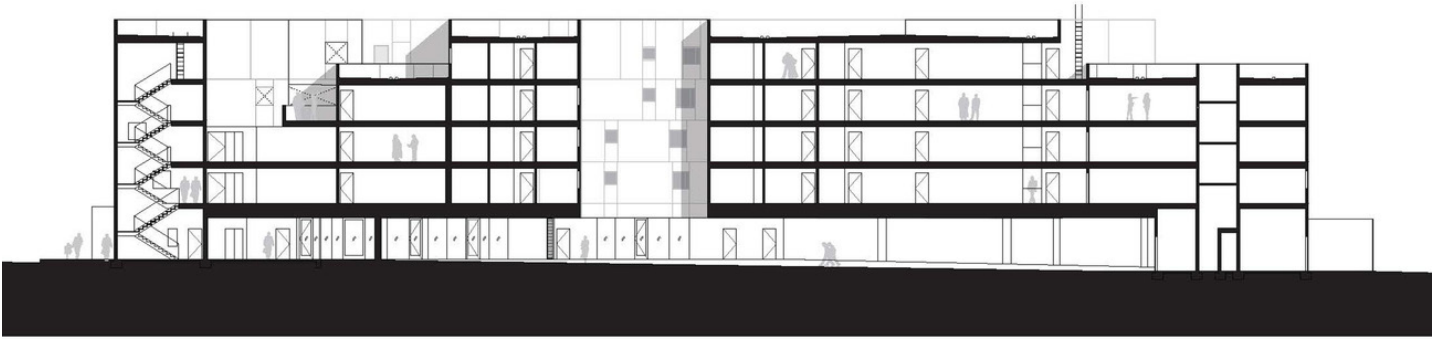
Users: Homeless people of L.A.

Facts:

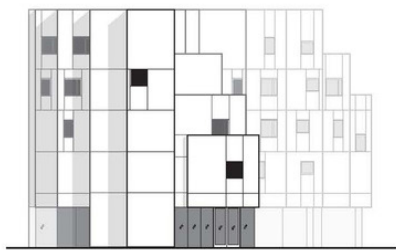
- Platinum LEED certified
- 64 studio apartments



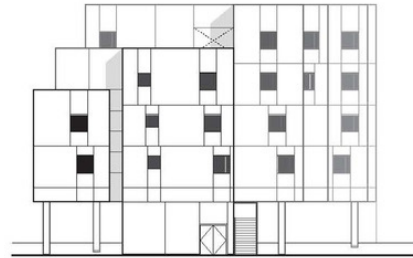
CASE STUDIES - CREST APARTMENTS



LONGITUDINAL SECTION

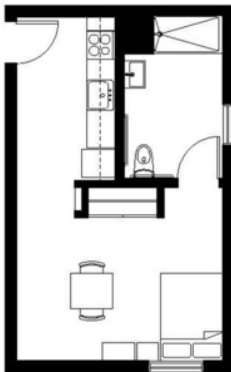


NORTH ELEVATION

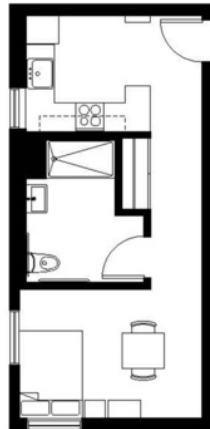


SOUTH ELEVATION

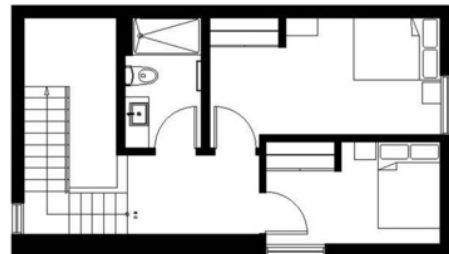
STUDIO UNIT 1



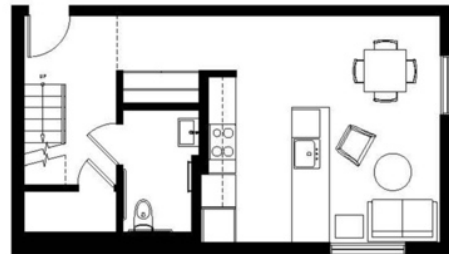
STUDIO UNIT 2



1-BEDROOM MANAGER'S UNIT

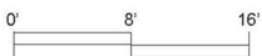


FIRST FLOOR

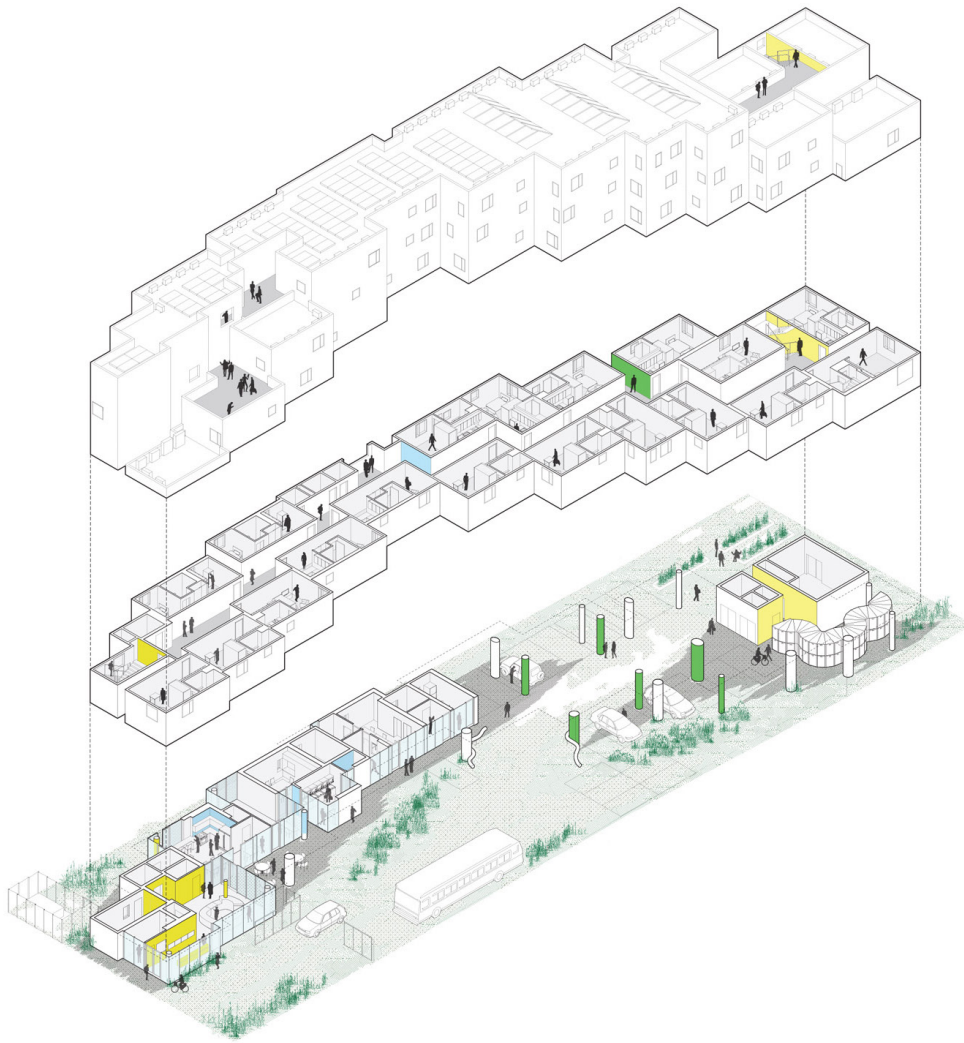


SECOND FLOOR

UNIT PLANS



CASE STUDIES - CREST APARTMENTS



MECHANICAL EFFICIENCY

- High-efficiency Plumbing Fixtures
- Energy Star Appliances
- High Efficiency Ductless Mechanical System
- PV Panels (Provides 6.5% of Energy Supply)
- Solar Thermal Panels

INDOOR ENVIRONMENTAL QUALITY

- Enhanced Outdoor Air Ventilation
- Local Exhaust
- Unit Compartmentalization
- No VOC Materials and Finishes
- Pre-Tenant Occupancy Flush

MATERIALS + RESOURCES

- 82% Construction Waste Diversion
- Precut Framing Packages
- FSC certified Tropical Wood
- Recycled Materials

SUSTAINABLE SITE

- Very High Density for Midrise (106 Units/Acre)
- Bioswale Stormwater Treatment (2 Bioswales)
- Drought Tolerant Planting
- High-Efficiency Irrigation
- 100% Permeable Paving/Landscape
- High Albedo Material/Reduced Heat Island Effect
- Community Planters
- Long-term Bike Storage for 100% of Residents

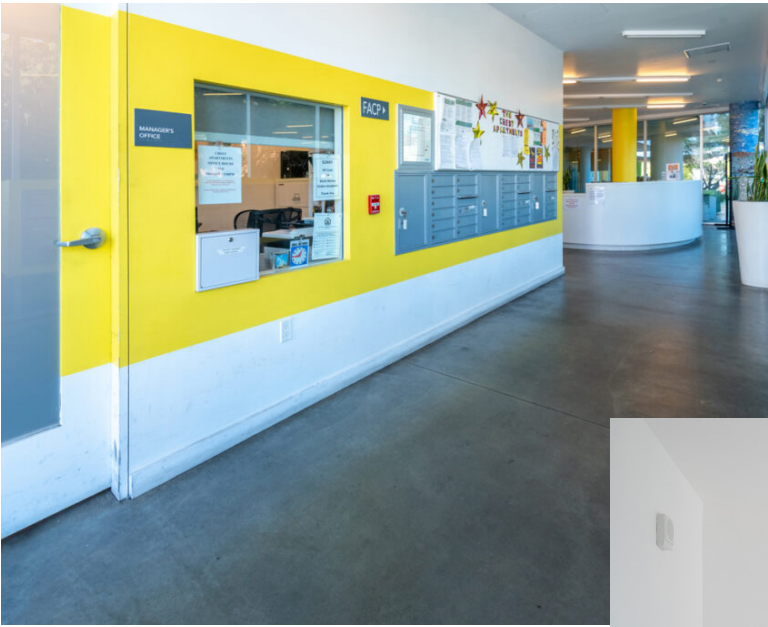
LOCATIONS + LINKAGES

- Infill Site
- Near Basic Community Resources
- Exemplary Public Transit Proximity



- | | | | |
|-------------------------|----------------------|---------------------|---------------------|
| 1 Manager's Office | 7 Conference Room | 13 Staff Break Room | 19 BBQ Area |
| 2 Reception Lobby | 8 Laundry Room | 14 Trash Room | 20 Transformer Yard |
| 3 Restroom | 9 Electrical Room | 15 Recycling Room | 21 Parking Area |
| 4 Elevator Machine Room | 10 Restroom | 16 Mechanical Room | |
| 5 Community Kitchen | 11 Counseling Office | 17 Bicycle Storage | |
| 6 Community Lounge | 12 Open Office | 18 Community Garden | |

CASE STUDIES - CREST APARTMENTS



CASE STUDIES - CREST APARTMENTS



Services & Amenities:

- Library
- Computer lab
- Laundry
- Nurse/exam room
- Food bank
- Administrative offices
- Case manager offices
- Dining room
- User storage
- Pest eradication units for belongings

Location: Seattle, Washington

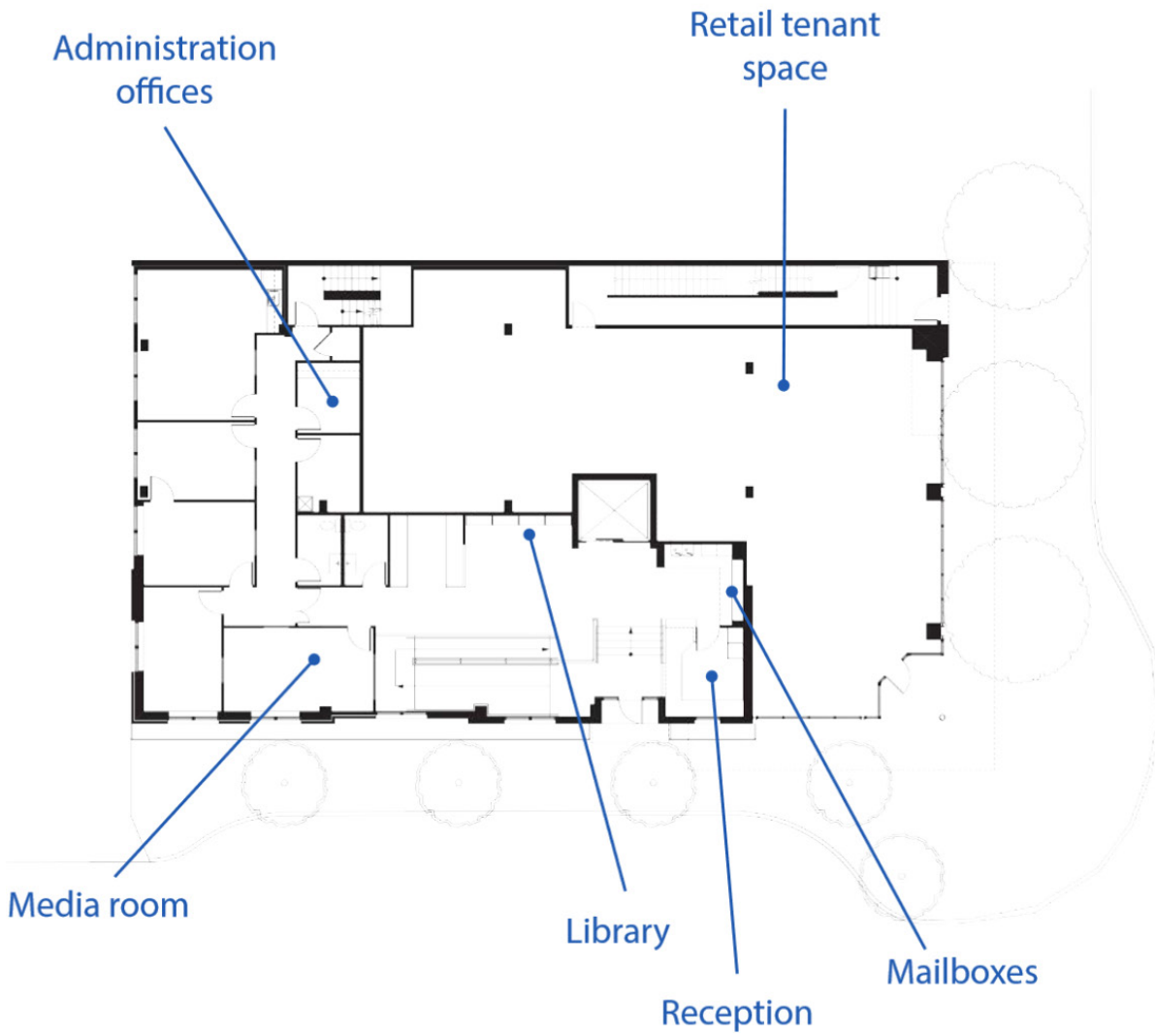
Square Footage: 38,000 sf

Floors: 6

Users: Single adult homeless women

Facts:

- Women pay 20-30% of their income
- Average age is 53
- Homeless for a year or more
- 90 single-occupant rooms



- Resident support spaces
- Resident sleeping spaces
- Resident kitchen and dining areas
- Staff counseling, administrative and support spaces
- Gardens, decks and patios

FIRST FLOOR

Case Manager's Office


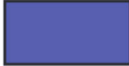



Sleeping Area



Exterior Deck and Community Garden

Advocate's Desk

Communal Dining and Bar Seating

-  Resident support spaces
-  Resident sleeping spaces
-  Resident kitchen and dining areas
-  Staff counseling, administrative and support spaces
-  Gardens, decks and patios

SECOND FLOOR



CASE STUDIES - BAKHITA GARDENS



Services & Amenities:

- Computer library
- Yoga/exercise/meditation room
- Art & activities room
- Childrens wellness center
- Trauma-focused daycare
- Full health clinic w/womens wellness & pediatrics
- Dining Pavillion
- Beauty salon
- Teaching kitchen
- Etc.

Location: Miami, Florida

Square Footage: 120,000 sf

Floors: 5

Users: Homeless women & children

Facts:

- 140 living units
- Beds for 500 residents



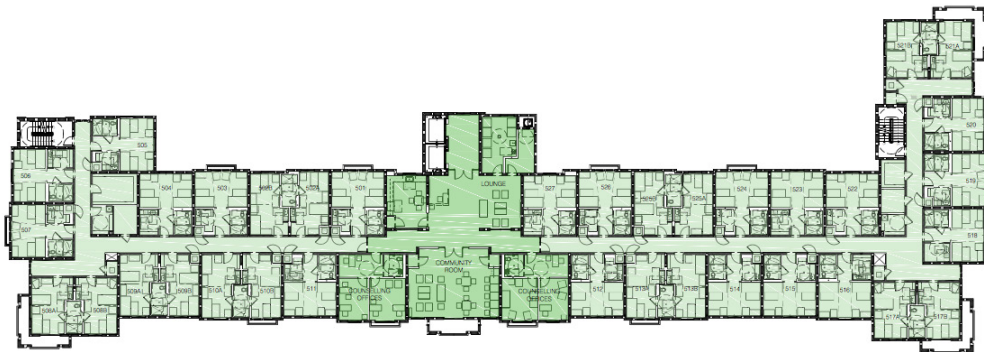
Second Floor



Third Floor



Fourth Floor



Fifth Floor



CASE STUDIES - LOTUS HOUSE

Public Support:

Lobby/Reception

Counseling Office

Open Workspace

Health Care Clinic

Communal:

Community Kitchen

Meditation/Quiet Room

Lounge

Shared Bathroom

Dining Seating

Exercise Room/Gym

Laundry Room

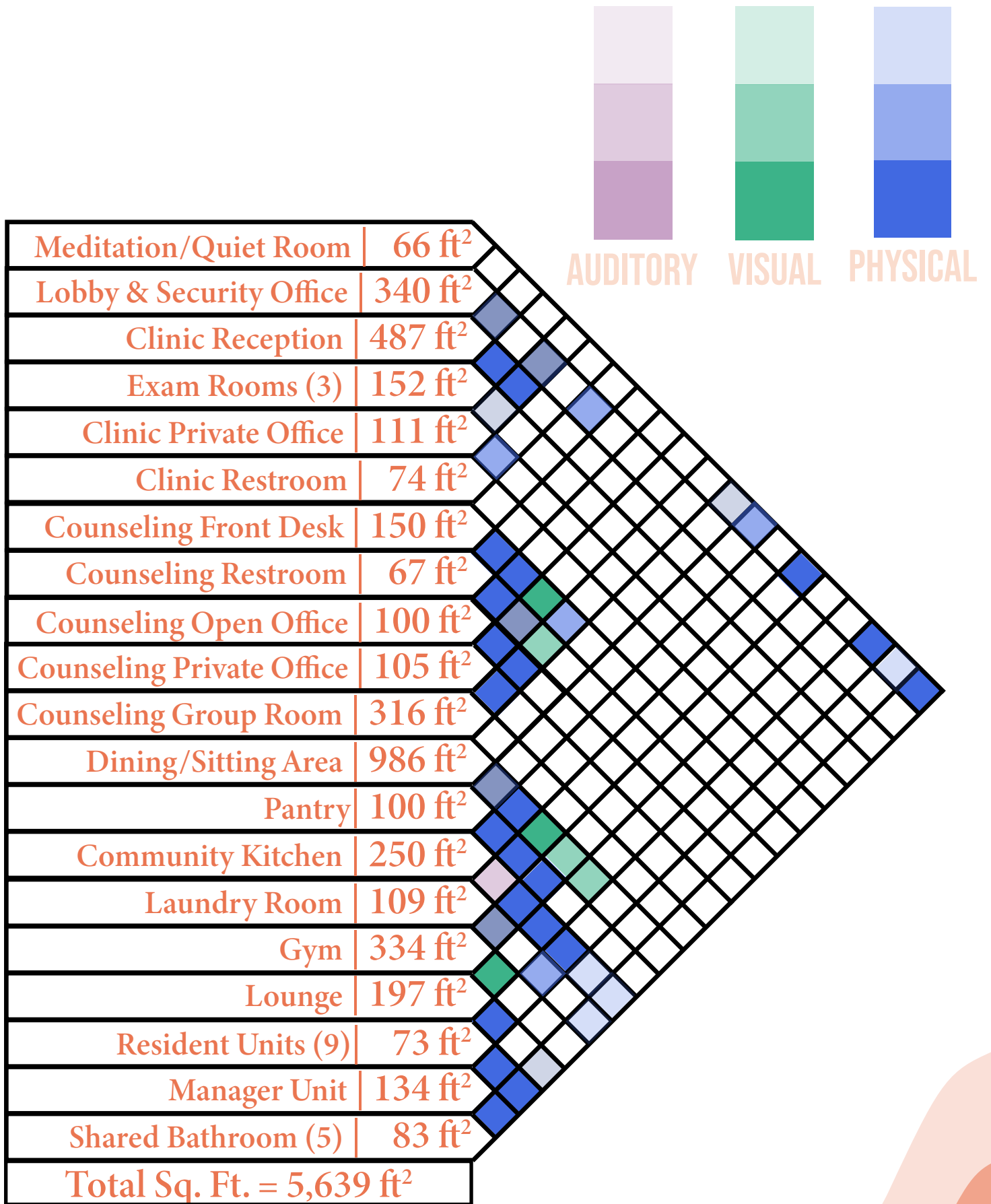
Pantry

Residential:

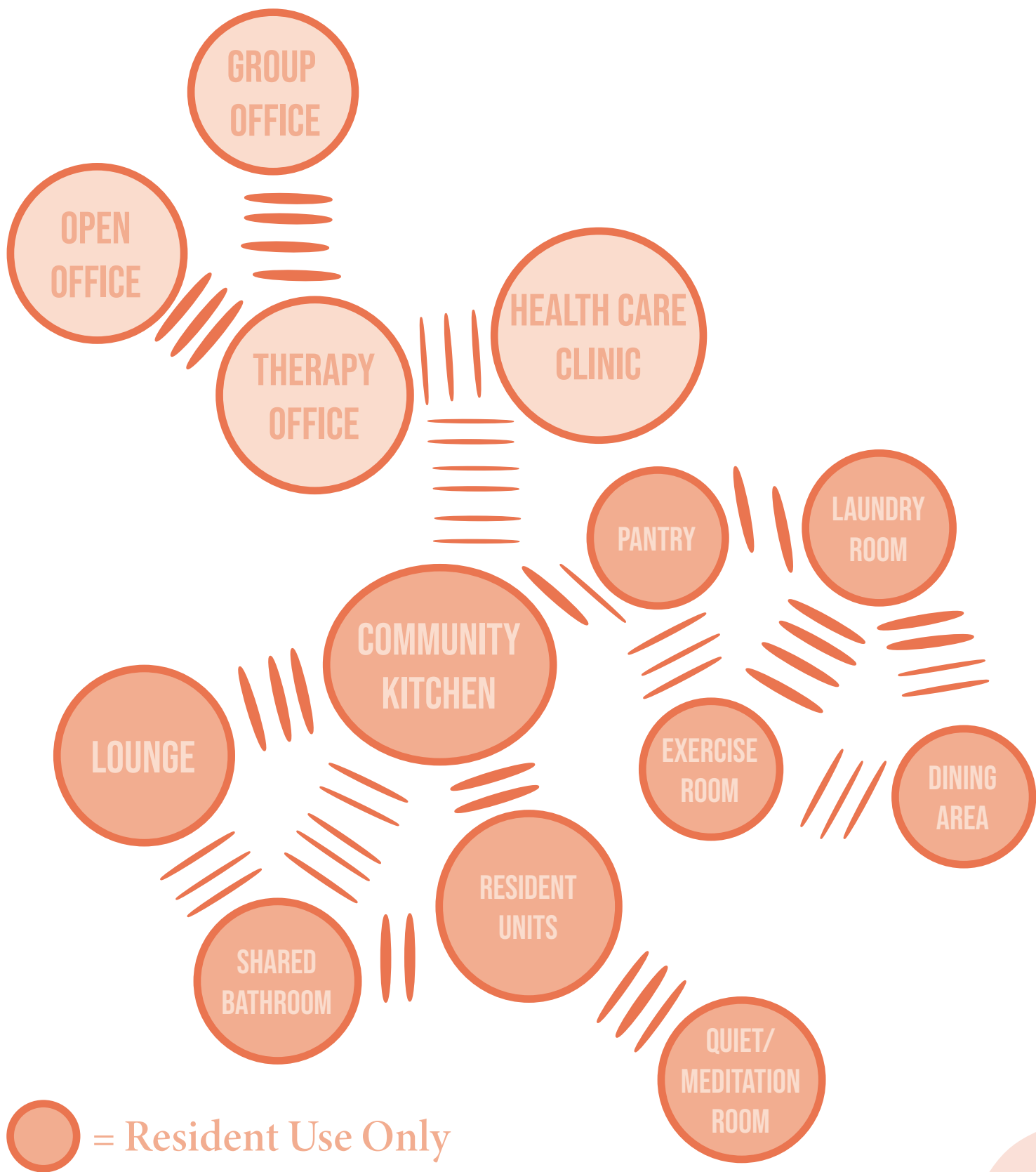
Single Occupancy 8' x 9'

Shelter Manager 15.5' x 8.5'

PROGRAM AREA SUMMARY



ADJACENCY MATRIX



 = Resident Use Only

 = Open to Community

ADJACENCY DIAGRAM

Lobby/Security Office

Floor Area: 340 ft²

Activity Description: This where guests and works go when they enter the building. This space functions as an information desk.

Occupant: Receptionist, guests, workers, residents

Space Adjacency: Health care clinic, building offices, & lounge

Design Qualities: Open, inviting, biophilia, & safe

Behavioral Qualities: Focus is centered around the desk, a quiet transitional space.

Acoustics: Soft furniture and curtains to absorb the sounds.

Illumination: Ambient, play of brilliance, & natural lighting

Heating/Cooling & Ventilation: Air conditioning and heat set to 68 degrees.

Furniture & Equipment: Reception desk, desk chair, computer, etc.

Codes & Requirements: n/a

Private Counseling Office (2)

Floor Area: 100 ft² (ea.)

Activity Description: Residents and drop in clients meet with counselors and therapists here for private sessions.

Occupant: Counselors/therapists & clients

Space Adjacency: Health care clinic, other offices, & reception

Design Qualities: Private, safe, quiet, & inviting

Behavioral Qualities: Soft comfortable furniture and materials are used for the chairs and curtains to make the client feel safe. There is a small desk but most of the space is set up like a small living room.

Acoustics: Soft furniture and curtains to absorb the sounds.

Illumination: Ambient, focal glow, & natural lighting

Heating/Cooling & Ventilation: Air conditioning and heat set to 70 degrees.

Furniture & Equipment: Sofa, arm chairs, desk, desk chairs, computers, phones, task lighting, etc.

Codes & Requirements: n/a

Clinic Private Office

Floor Area: 111 ft²

Activity Description: A private space for doctors to work and meet with patients.

Occupant: Doctors & Patients

Space Adjacency: Clinic lobby, restroom, & exam rooms

Design Qualities: Private, safe, quiet, & inviting

Behavioral Qualities: Soft comfortable furniture and materials are used for the chairs and curtains to make the client feel safe. This room is set up like a traditional office for working and meeting patients.

Acoustics: Soft furniture and curtains to absorb the sounds.

Illumination: Ambient, focal glow, & natural lighting

Heating/Cooling & Ventilation: Air conditioning and heat set to 68 degrees.

Furniture & Equipment: Desk, desk chairs, computers, phones, task lighting, etc.

Codes & Requirements: n/a

Counseling Open Office

Floor Area: 100 ft²

Activity Description: Residents have access to this space to work.

Occupant: Healing Home residents

Space Adjacency: Other offices, community kitchen, resident units, & reception

Design Qualities: Private or communal, safe, quiet, & inviting

Behavioral Qualities: Soft comfortable furniture and materials are used for the chairs and curtains to make the residents feel safe. There are multiple desks and different chairs that residents are invited to use.

Acoustics: Soft furniture and curtains to absorb the sounds.

Illumination: Ambient, focal glow, & natural lighting

Heating/Cooling & Ventilation: Air conditioning and heat set to 70 degrees.

Furniture & Equipment: Sofa, arm chairs, desks, desk chairs, computers, phones, coffee table, task lighting, end tables, etc.

Codes & Requirements: n/a

Counseling Group Meeting Room

Floor Area: 316 ft²

Activity Description: Residents and drop in clients meet with part-time or temporary counselors and therapists here for group sessions.

Occupant: Counselors/therapists & clients

Space Adjacency: Health care clinic, other offices, & reception

Design Qualities: Private or Open, safe, quiet, & inviting

Behavioral Qualities: Soft comfortable furniture and materials are used for the chairs and curtains to make the client feel safe. There is a small table but most of the space is set up like a living room.

Acoustics: Soft furniture and curtains to absorb the sounds.

Illumination: Ambient, focal glow, & natural lighting

Heating/Cooling & Ventilation: Air conditioning and heat set to 68 degrees.

Furniture & Equipment: Sofa, arm chairs, desk, desk chairs, coffee table, task lighting, etc.

Codes & Requirements: n/a

Community Kitchen

Floor Area: 250 ft²

Activity Description: A large kitchen where residents and those who work at the home can congregate to make and eat meals.

Occupant: Home manager, volunteers, & residents

Space Adjacency: Resident units & lounge

Design Qualities: Shared, safe, inviting, private/group, & biophilia

Behavioral Qualities: Warm wood tones that are inviting and natural light. The kitchen is the heart of the residential area of the home. A place where residents can join together.

Acoustics: Limited acoustic materials, mainly hard surfaces.

Illumination: Ambient, play of brilliance, & natural lighting

Heating/Cooling & Ventilation: Air conditioning and heat set to 68 degrees.

Furniture & Equipment: Kitchen appliances, cabinets, drawers, pantry, etc.

Codes & Requirements: n/a

Laundry Room

Floor Area: 109 ft²

Activity Description: Residents come here to do their laundry. More than one resident can be doing laundry at the same time.

Occupant: Residents

Space Adjacency: Resident units, exercise room, & shared bathroom

Design Qualities: Inviting, functional, & organized

Behavioral Qualities: The laundry room will have several washers and dryers for residents to use.

Acoustics: None

Illumination: Ambient, play of brilliance, & natural lighting

Heating/Cooling & Ventilation: Air conditioning and heat set to 68 degrees.

Furniture & Equipment: Washer/dryer & folding table w/shelf

Codes & Requirements: n/a

Health Care Clinic

Floor Area: 1,184 ft²

Activity Description: Residents and drop in clients can come here to seek medical help or standard health care.

Occupant: Doctors, nurses, residents, & drop-in clients

Space Adjacency: Lobby & Counseling Office

Design Qualities: Private, safe, quiet, & inviting

Behavioral Qualities: Clients enter the waiting area and move to the receptionist to meet to check-in. The waiting area sits in the middle for clients to independently wait for their appointment.

Acoustics: Soft furniture and curtains to absorb the sounds.

Illumination: Ambient, decorative, focal glow, & natural lighting

Heating/Cooling & Ventilation: Air conditioning and heat set to 68 degrees.

Furniture & Equipment: Sofa, arm chairs, reception desk, desk chairs, computers, phones, coffee table, task lighting, end tables, etc.

Codes & Requirements: n/a

Resident Units (9)

Floor Area: 62-82 ft² (ea.)

Activity Description: Individual units for residents to sleep in and keep their private belongings.

Occupant: Residents & home manager

Space Adjacency: Exercise room, lounge, community kitchen, shared bathroom, meditation/quiet room, pantry, & laundry room.

Design Qualities: Private, safe, quiet, & inviting

Behavioral Qualities: A small space that is quaint and comfortable for the residents. When they enter the room they feel relaxed and at home.

Acoustics: Soft furniture and curtains to absorb the sounds.

Illumination: Ambient, play of brilliance, & natural lighting

Heating/Cooling & Ventilation: Air conditioning and heat set to 68 degrees.

Furniture & Equipment: Bed & closet/dresser

Codes & Requirements: n/a

Shared Bathroom

Floor Area: 75-95 ft²

Activity Description: Residents use this shared bathroom located near the resident units. It is occasionally used but visitors and employees.

Occupant: Residents, employees, & visitors

Space Adjacency: Community kitchen, exercise room, resident units, meditation/quiet room, & lounge

Design Qualities: Private, safe, & quiet

Behavioral Qualities: Durable and inviting materials that make the residents feel safe and relaxed in the shared bathroom.

Acoustics: None

Illumination: Ambient, focal glow, & natural lighting

Heating/Cooling & Ventilation: Air conditioning and heat set to 68 degrees.

Furniture & Equipment: Shower stall, toilet, & sink

Codes & Requirements: n/a

Exercise Room/Gym

Floor Area: 334 ft²

Activity Description: Residents come to this room to work out with cardio machines & free weights.

Occupant: Residents

Space Adjacency: Resident units, laundry room, shared bathroom, and community kitchen

Design Qualities: Safe, inviting, motivating, and relaxing

Behavioral Qualities: Colors that are motivating and relaxing. Encouraging residents that come there to workout.

Acoustics: Rubber to absorb sound and music. Curtains to reduce echoing.

Illumination: Play of brilliance, natural lighting, and focal glow

Heating/Cooling & Ventilation: Air conditioning and heat set to 68 degrees. Also has ceiling fans.

Furniture & Equipment: free weights, cardio machines, & benches

Codes & Requirements: n/a

Lounge

Floor Area: 197 ft²

Activity Description: Residents and sometimes volunteers/employees come here to relax or participate in activities.

Occupant: Residents, volunteers, & employees

Space Adjacency: Resident units, community kitchen, & shared bathroom

Design Qualities: Private, safe, quiet, & inviting

Behavioral Qualities: This space includes soft and warm colored materials that make the user feel relaxed and comfortable.

Acoustics: Soft furniture and curtains to absorb the sounds.

Illumination: Ambient, play of brilliance, & natural lighting

Heating/Cooling & Ventilation: Air conditioning and heat set to 70 degrees.

Furniture & Equipment: Sofas, arm chairs, coffee table, lamps, end tables, tv stand, tv, workspace table, etc.

Codes & Requirements: n/a

Clinic Front Desk

Floor Area: 250 ft²

Activity Description: Reception area where patient check-in and wait for their appointment.

Occupant: Doctors, employees, volunteers, & patients

Space Adjacency: Lobby/Security Office, Counseling Office

Design Qualities: Shared, safe, inviting, & biophilia

Behavioral Qualities: Warm wood tones that are inviting and natural light. A place that is easy to clean but makes the users feel safe and comfortable.

Acoustics: Carpet & curtains.

Illumination: Ambient, play of brilliance, & natural lighting

Heating/Cooling & Ventilation: Air conditioning and heat set to 68 degrees.

Furniture & Equipment: Chairs, sofa, task lighting, reception desk, desk chair, computer, phone, file cabinet, etc.

Codes & Requirements: n/a

Clinic Exam Rooms (3)

Floor Area: 152 ft²

Activity Description: Private exam rooms for meeting with patients.

Occupant: Doctors, employees, volunteers, & patients

Space Adjacency: Lobby/Security Office, Clinic reception desk, clinic private office, Counseling Office

Design Qualities: Private , safe, inviting , & biophilia

Behavioral Qualities: Warm wood tones that are inviting and natural light. A place that is easy to clean but makes the users feel safe and comfortable.

Acoustics: Curtains and soft seating.

Illumination: Ambient & natural lighting

Heating/Cooling & Ventilation: Air conditioning and heat set to 68 degrees.

Furniture & Equipment: Chairs, computer, exam table, cabinetry, etc.

Codes & Requirements: n/a

Meditation/Quiet Room

Floor Area: 66 ft²

Activity Description: A private space for residents to go, outside of their private rooms, to take a moment of pause and meditate or just relax.

Occupant: Residents

Space Adjacency: Resident units, manager unit, shared bathrooms, laundry room.

Design Qualities: Private , safe, inviting , & biophilia

Behavioral Qualities: Soft/warm dimmable lighting that creates a peaceful space of respite for residents. A room that is inviting and comfortable.

Acoustics: Acoustic sound tiles, carpet, and soft seating.

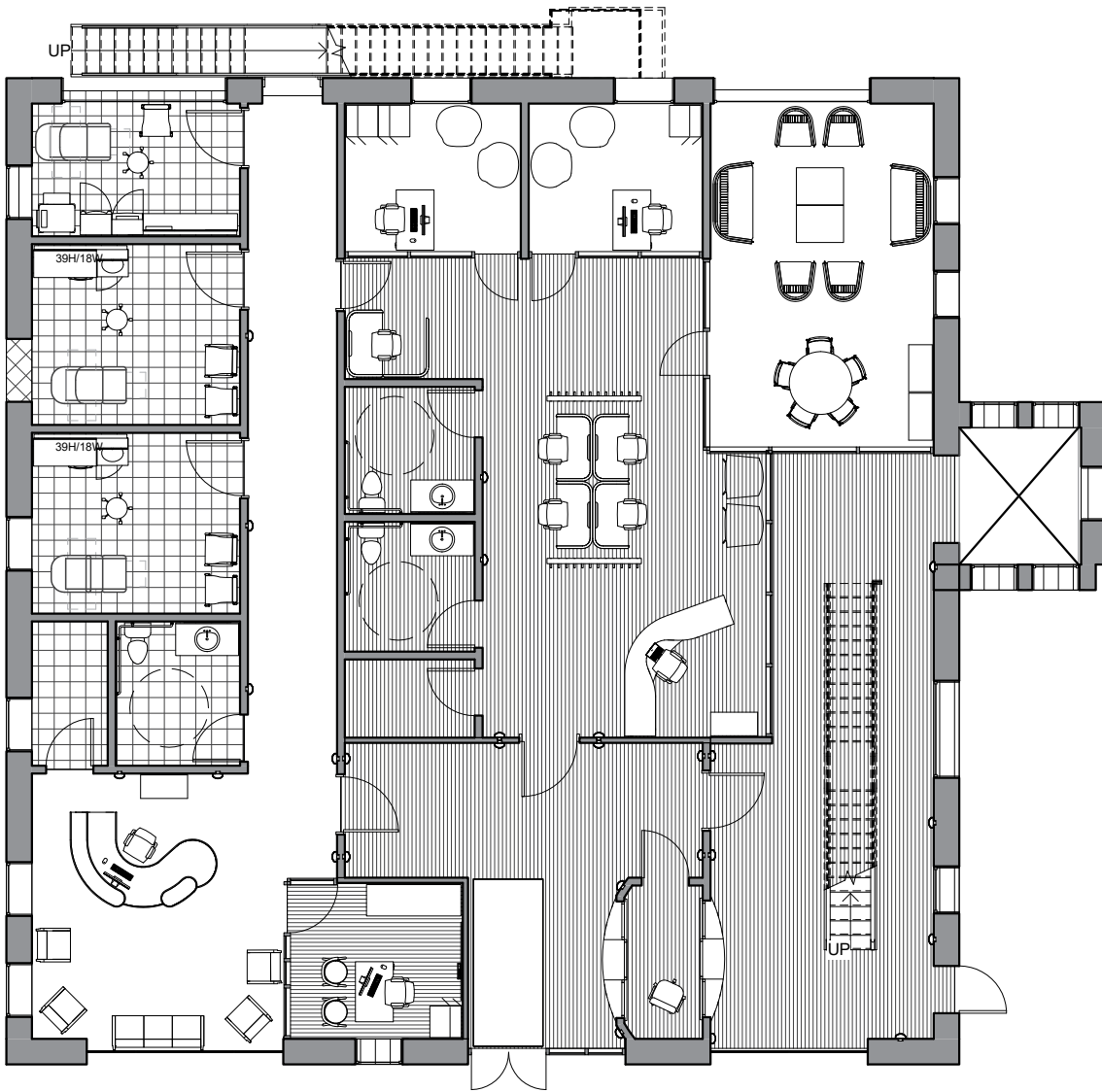
Illumination: Soft Ambient & natural lighting

Heating/Cooling & Ventilation: Air conditioning and heat set to 70 degrees.

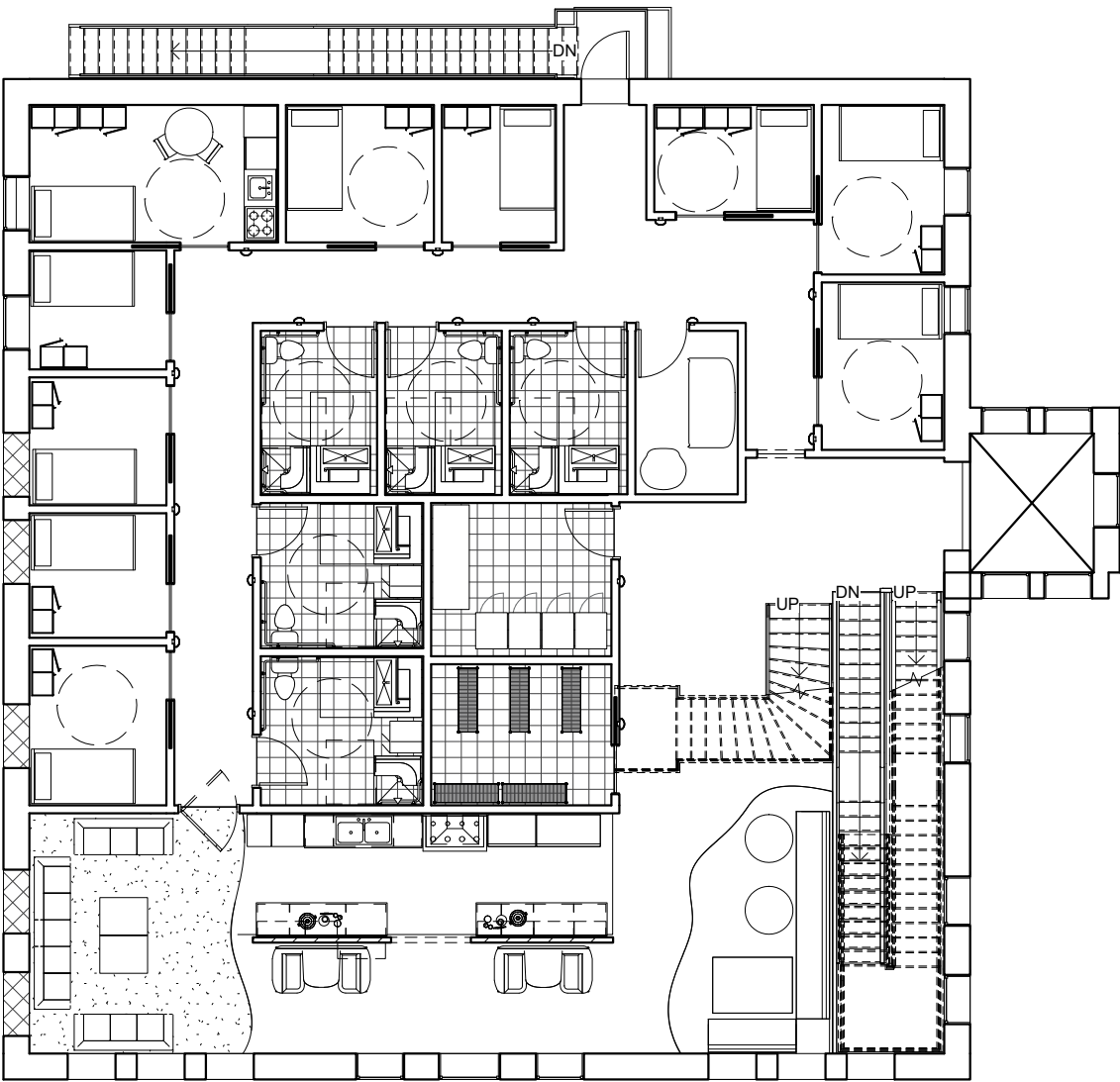
Furniture & Equipment: Acoustic tiles, Chair, & Sofa

Codes & Requirements: n/a

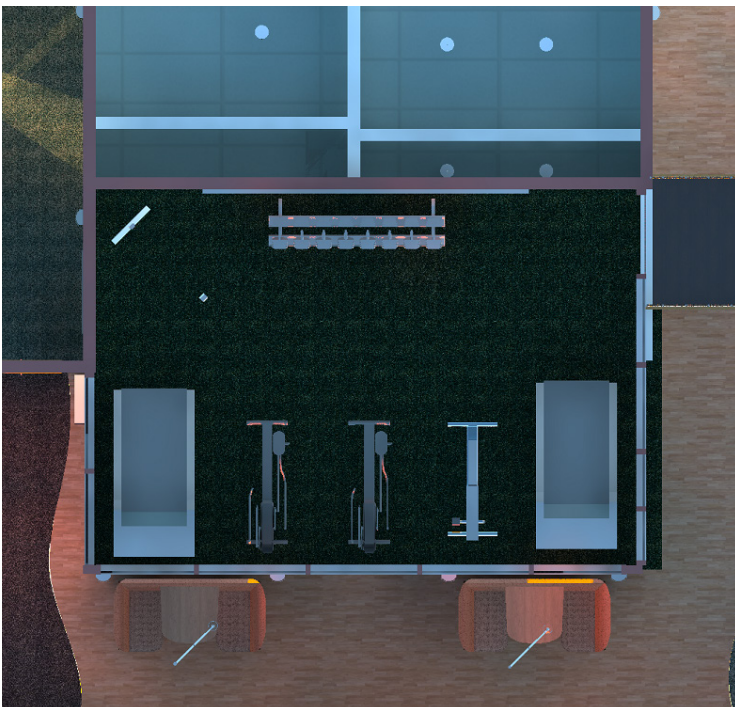
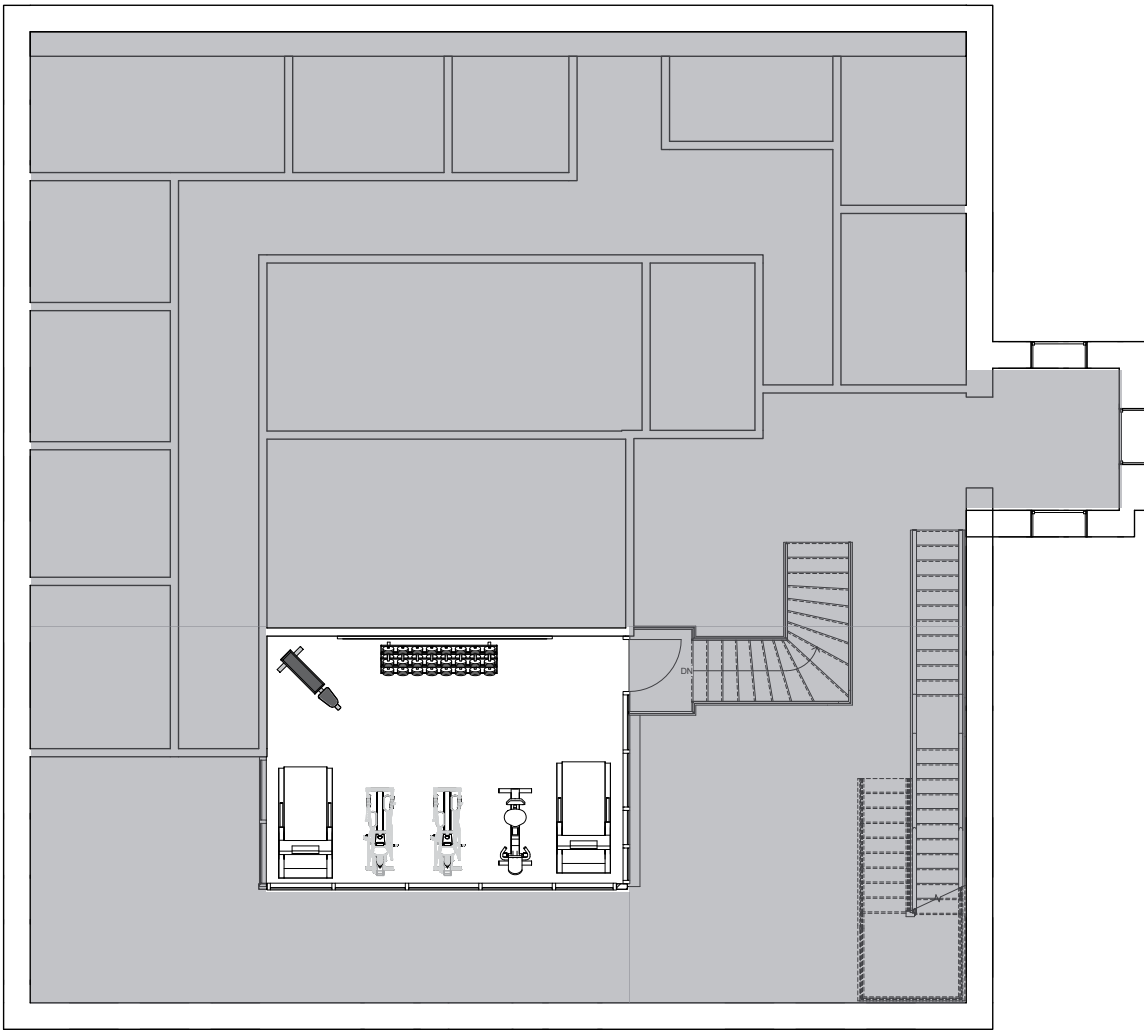




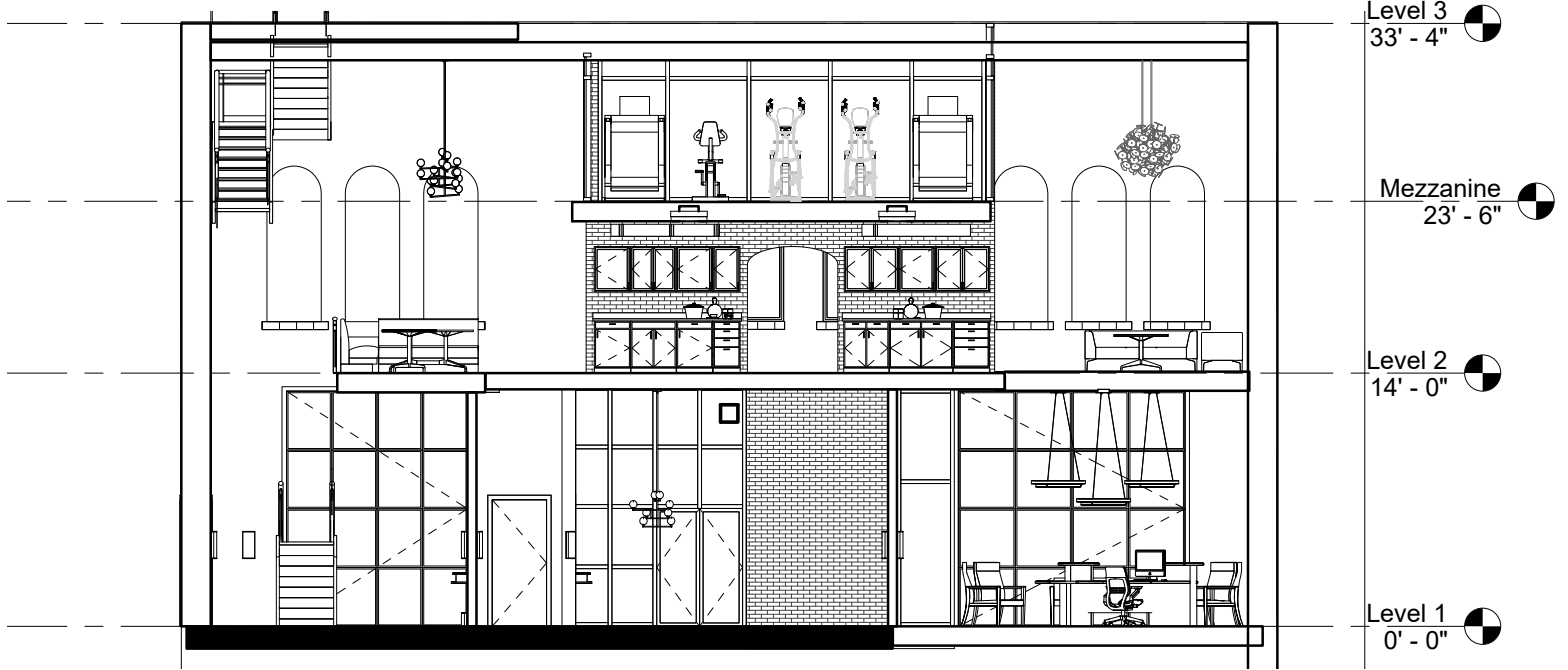
FLOOR PLAN - 1ST FLOOR



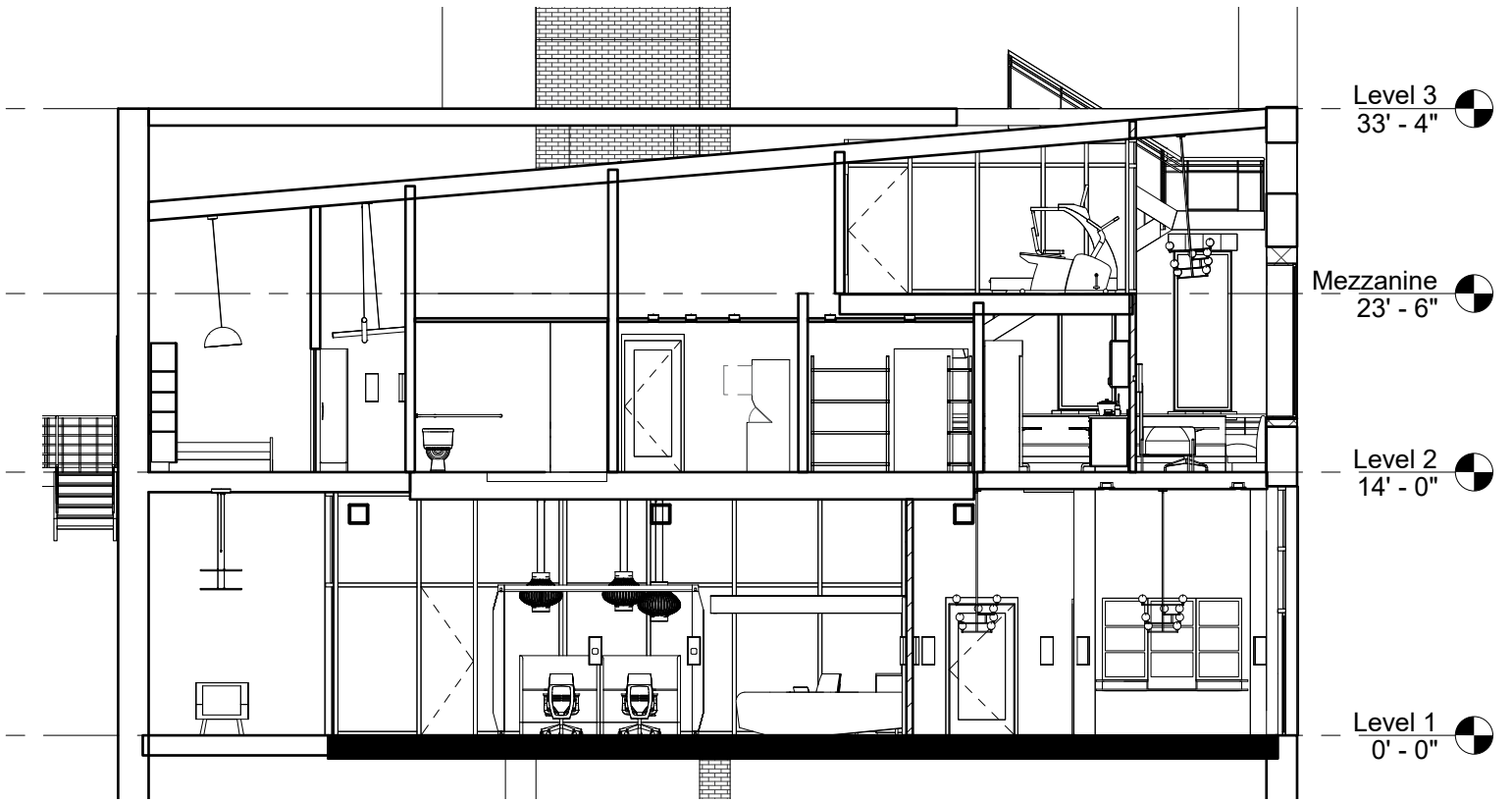
FLOOR PLAN - 2ND FLOOR



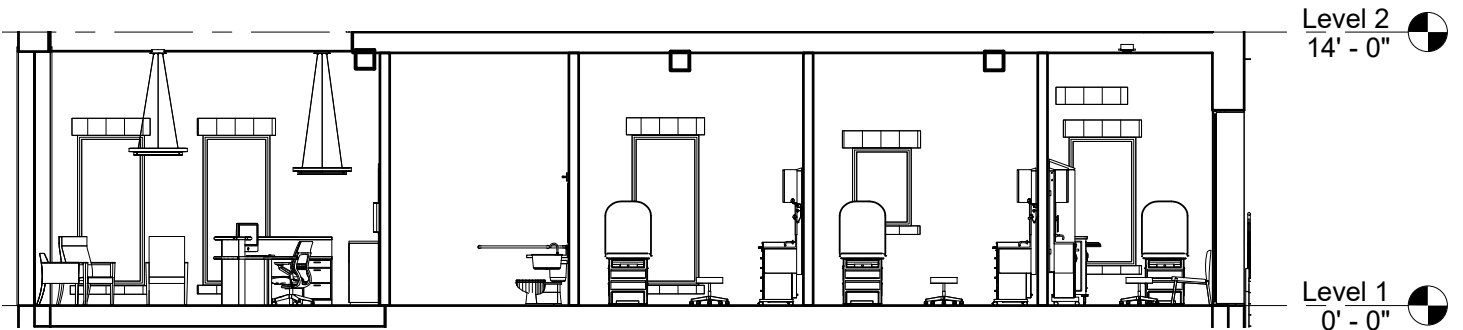
FLOOR PLAN - MEZZANINE



SECTION CUT 1



SECTION CUT 2



SECTION CUT 3



PERSPECTIVES



PERSPECTIVES



PERSPECTIVES



Case Study Resources:

<https://www.lotusendowment.org/>

<https://www.eworks.org/detail-bakhita-gardens>

<https://www.archdaily.com/897050/crest-apartments-michael-maltzan-architecture>

<http://o42arch.com/crest-apartments>

<https://lotushouse.org/>

Secondary Research Resources

<https://www.csb.org/news-and-publications/interactive-data>

<https://www.sanctuarynight.com/who-we-are>

<https://www.lowerlights.org>

<http://www.fohcolumbus.com/make-a-difference.html>

<https://www.homelessshelterdirectory.org/county/oh-franklin>

<https://www.colorpsychology.org/mint/>

<https://www.color-meanings.com/7-best-colors-healing/>